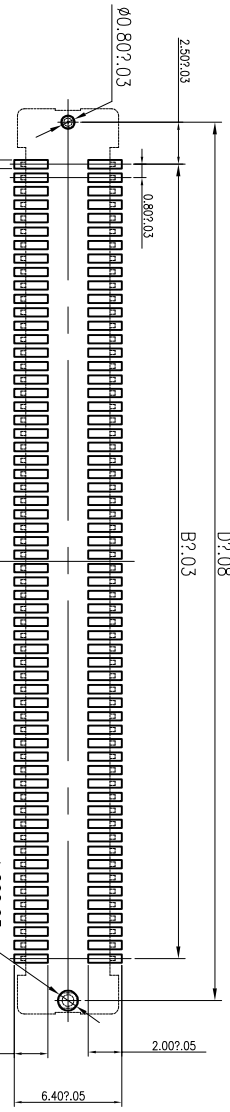
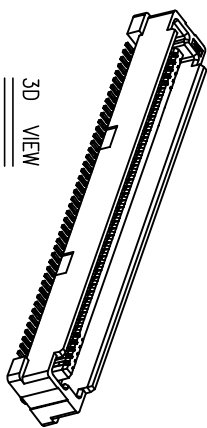
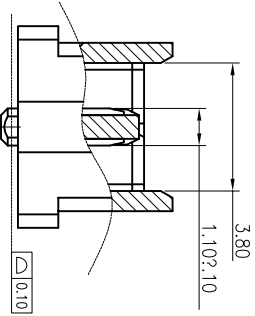
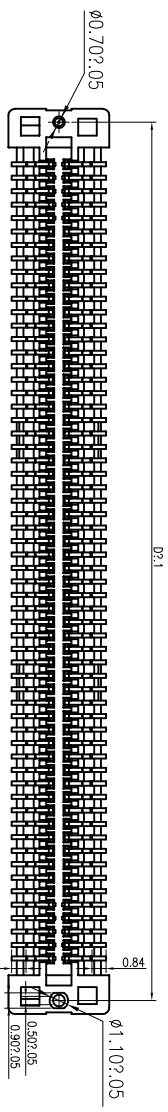
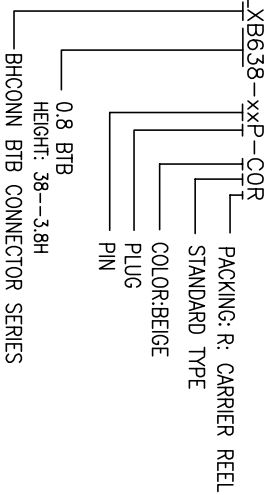
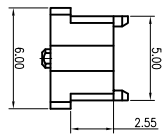
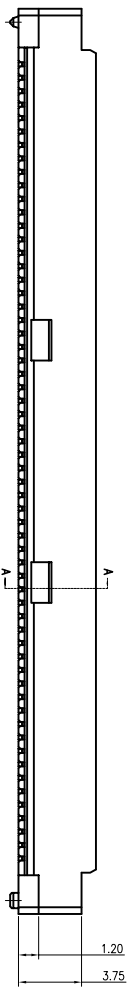
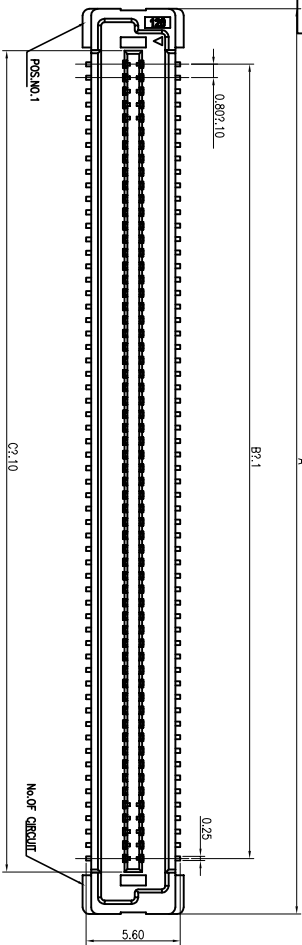


修改日期	修改摘要	签名	日期
SER	REVISION DESCRIPTION	SIGNATURE	DATE



RECOMMENDED P.C. BOARD LAYOUT

NO. of contacts	Dimensions			
	A.	B.	C.	D.
40	21.80	15.20	16.80	20.20
60	29.80	23.20	24.80	28.20
80	37.80	31.20	32.80	36.20
100	45.80	39.20	40.80	44.20
120	53.80	47.20	48.80	52.20
140	61.80	55.20	56.80	60.20
160	69.80	63.20	64.80	68.20
180	77.80	71.20	72.80	76.20
200	85.80	79.20	80.80	84.20

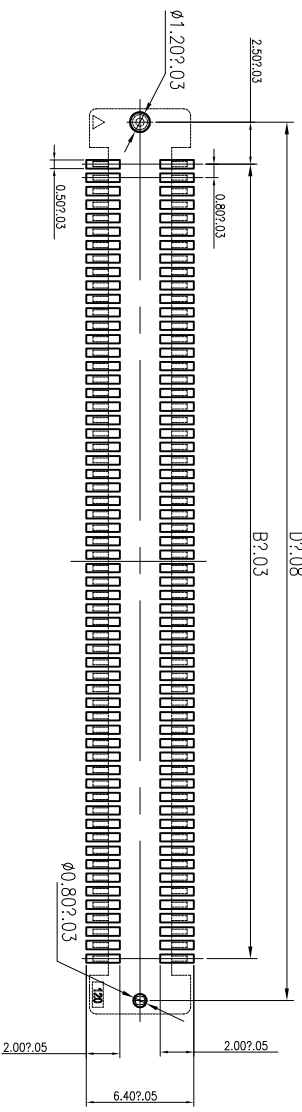
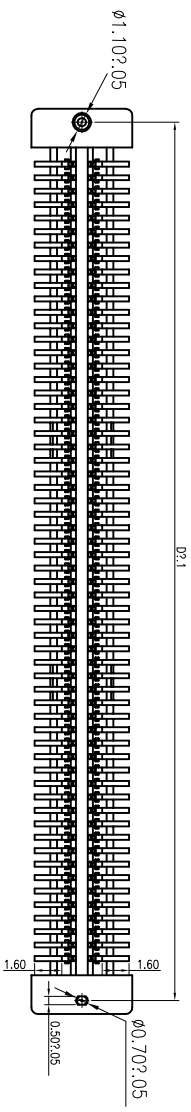
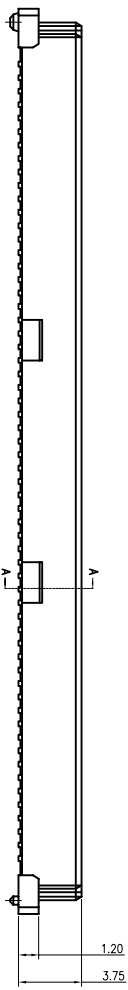
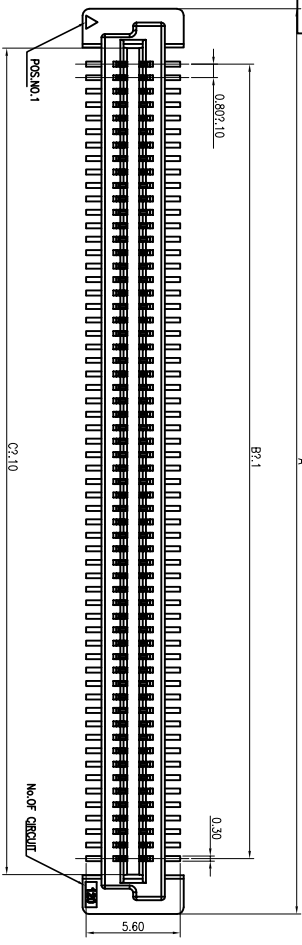


深圳市鑫南天科技有限公司

品名 (ITEM): 0.8mm PITCH BTB CONNECTOR PLUG ASSEMBLY 5.0H TYPE

一般公差	±0.25
长度公差	±0.15
角度公差	±1°
表面粗糙度	Ra 1.6
材料 (MATERIAL):	料号 (PART NO.):
图号 (DRAWING):	审核 (CHECK):
批准 (APPD):	技术 (TECH):

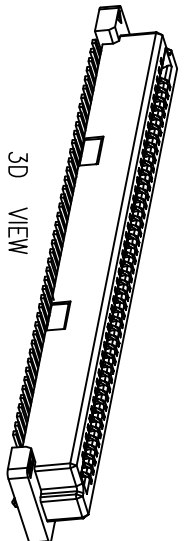
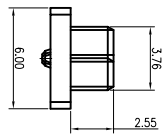
修订	修订描述	签名	日期
SER	REVISION DESCRIPTION	SIGNATURE	DATE



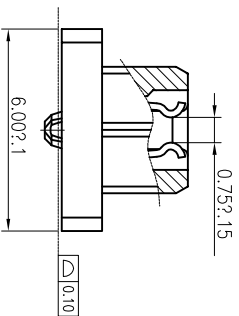
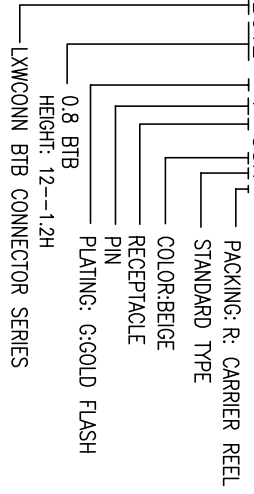
RECOMMENDED P.C. BOARD LAYOUT

NOTES:

- 1.HOUSING: LCP HIGH-TEMP THERMOPLASTIC UL94V-0 COLOR:BEIGE
- 2.TERMINAL:PHOSPHOR BRONZE
PLATING:1μ" GOLD FLASH OVERALL 50~100μ" NICKEL UNDER PLATED.
- 3.CODING INFORMATION: LXB612-**-COR



3D VIEW



NO. of contacts	Dimensions			
	A.	B.	C.	D.
40	21.80	15.20	17.10	20.20
60	29.80	23.20	25.10	28.20
80	37.80	31.20	33.10	36.20
100	45.80	39.20	41.10	44.20
120	53.80	47.20	49.10	52.20
140	61.80	55.20	57.10	60.20
160	69.80	63.20	65.10	68.20
180	77.80	71.20	73.10	76.20
200	85.80	79.20	81.10	84.20



深圳市鑫南天科技有限公司

制图 (DR):	Kevin 2024.03.15
审核 (CND):	
批准 (APP):	

一般公差	±0.25
轮廓公差	±0.15
位置公差	±0.10
角度公差	±1°
表面粗糙度	Ra 1.6
料号 (PART NO.):	XNT612-**-COR
比例 (SCALE):	1:1
图幅 (SIZE):	A4
张数 (SHEET):	1 OF 1
单位 (UNITS):	mm